

# CERTIFICATE OF LOCATION OF GOVERNMENT CORNER

NORTH QUARTER Corner of Section 26, Township 106, Range 39, 5TH P.M.

STATE OF MINNESOTA, County of MURRAY

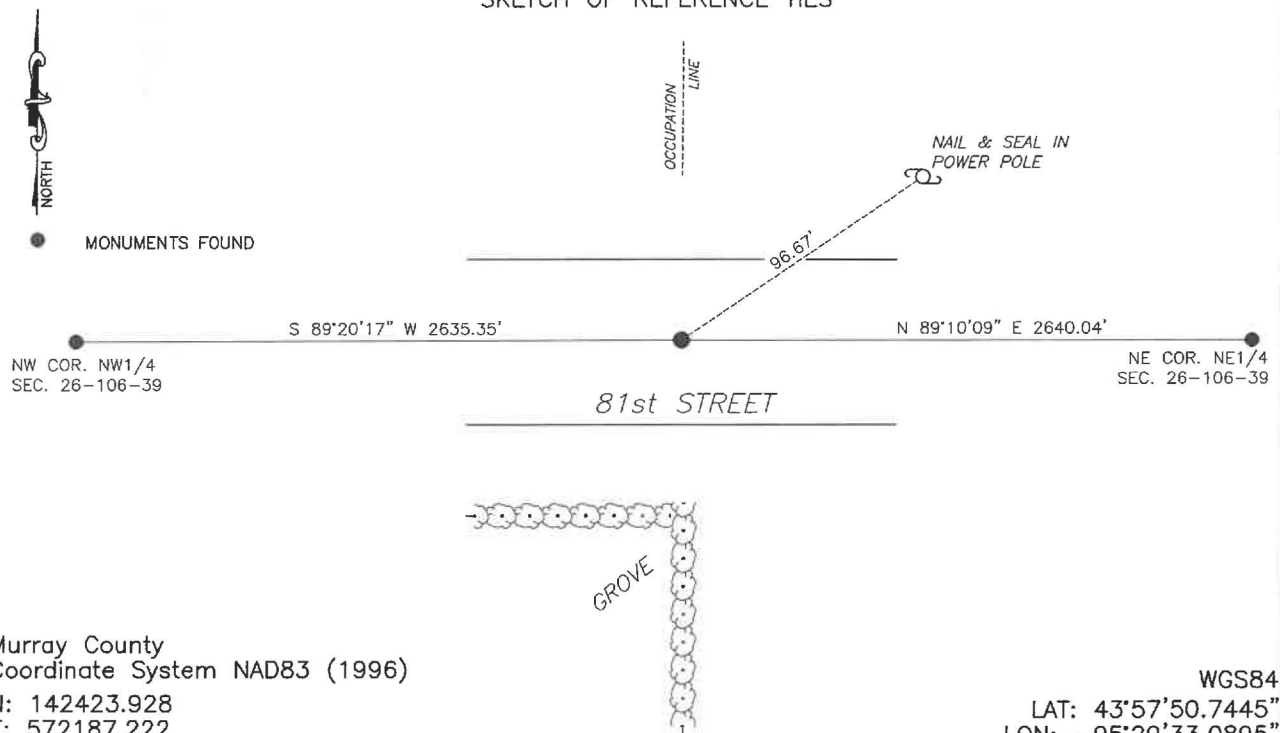
At the corner location shown on the sketch:

☒ On 6/28/2024 found a GIN SPIKE OVER TOP OF STONE.  
DATE

☒ left monument as found, ☐ lowered monument, ☐ removed monument (explain)

☐ On \_\_\_\_\_ placed a \_\_\_\_\_  
DATE

## SKETCH OF REFERENCE TIES



Statement of evidence relative to this corner location is on back of page.

I hereby certify that this document and the data contained herein was prepared by me or under my direct supervision.

Daniel L. Bueltel  
Daniel L. Bueltel  
License No. 43844

3/13/2025  
DATE

MAR 13 2025

Karen Brown

MURRAY COUNTY RECORDER

Statement of Evidence

NORTH QUARTER CORNER SECTION 26, T106N, R39W OF THE 5th P.M.

In September 1858 W.J. Neely surveyed the east township line.

In July of 1861 J.W. Myers surveyed the north, south, and west township lines.

In August of 1861 Wellman & Smoot subdivided the township.

A survey by J.W. Woolstencroft dated July 19, 1898 notes a 6"x6"x16" stone at the corner.

A corner certificate filed by Perry Zieske, L.S. #23008, dated September 21, 2005 shows he found a large pointed field stone 8" below grade and placed a gin spike over top of the stone.

On June 28, 2024 Bueltel-Moseng Land Surveying found a gin spike at the corner, probed beside and hit stone beneath. Accepted the monument as the corner.